

# Becoming a Best-in-Class Structural Heart Program

# Introduction

---

The CardioCare platform has partnered with healthcare systems extensively to help elevate the standard of structural heart patient care. Data uncovered from this experience have helped us understand what best-in-class patient care looks like nationwide.

Here we will highlight four key insights you can use to evaluate the performance of your structural heart program.

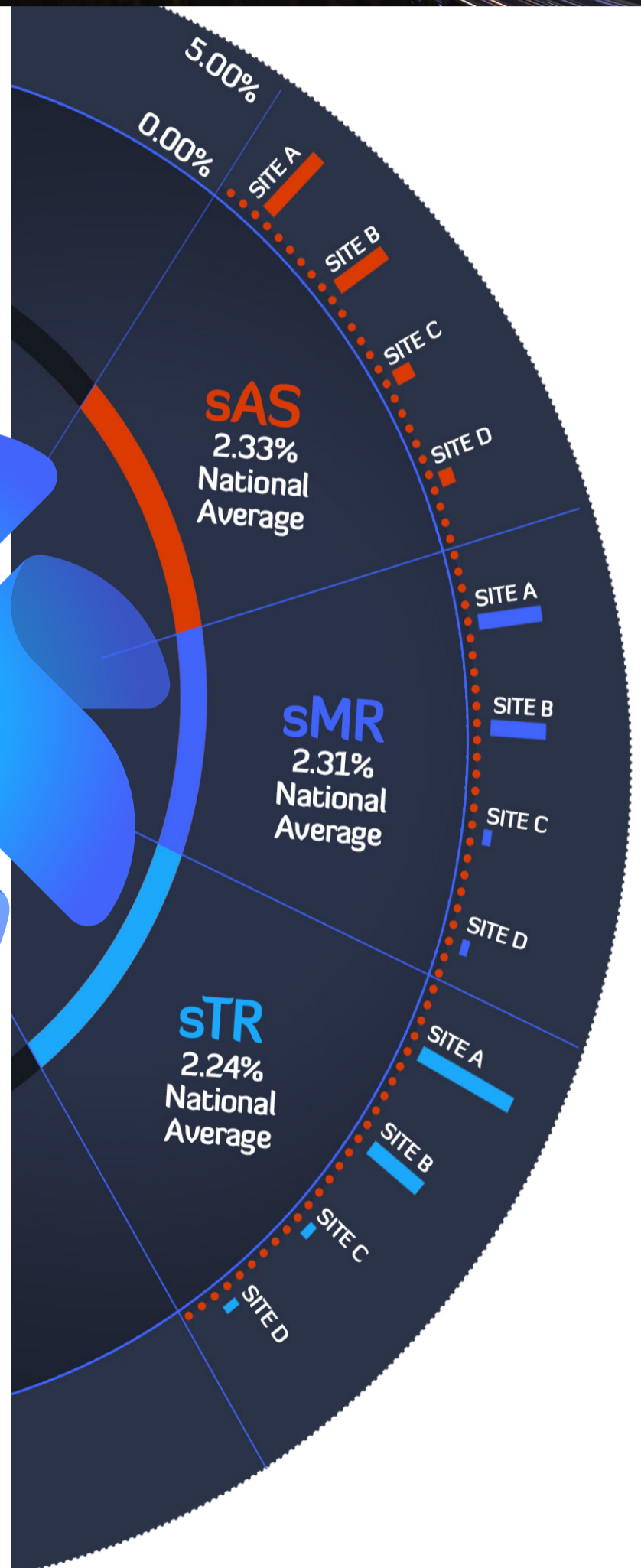


# Insight #1: Significant rates of variability in structural heart disease diagnosis

Early data from a retrospective analysis of over one million echocardiograms in CardioCare's database uncovered significant variability in diagnosis rates for severe aortic stenosis (AS), mitral regurgitation (MR) and tricuspid regurgitation (TR) throughout the US.<sup>1</sup>



## How is your system standardizing diagnostic quality?



<sup>1</sup>Data collected on 9/30/21. National average includes 35 sites. Analysis includes diagnosis rate of patients from echoed population at the hospital and are depicted from a random sample of sites.

## Insight #2:

# A large percentage of untreated sAS and sMR patients remain symptomatic

This retrospective analysis also discovered that 77% of untreated severe AS and severe MR patients have documented symptoms in the patient's electronic medical record.<sup>2</sup>

These findings demonstrate the need for solutions to uncover gaps in care to ensure patients receive timely, guideline-directed therapy.

## 77% of Untreated sAS and sMR Patients are Symptomatic<sup>2</sup>



CardioCare, egnite's flagship solution, represents a revolution in structural heart program management. Using AI, the CardioCare platform provides a comprehensive view of a hospital's structural heart patient population and helps physicians identify the most at-risk patients.

## How is your system ensuring patients receive timely care?

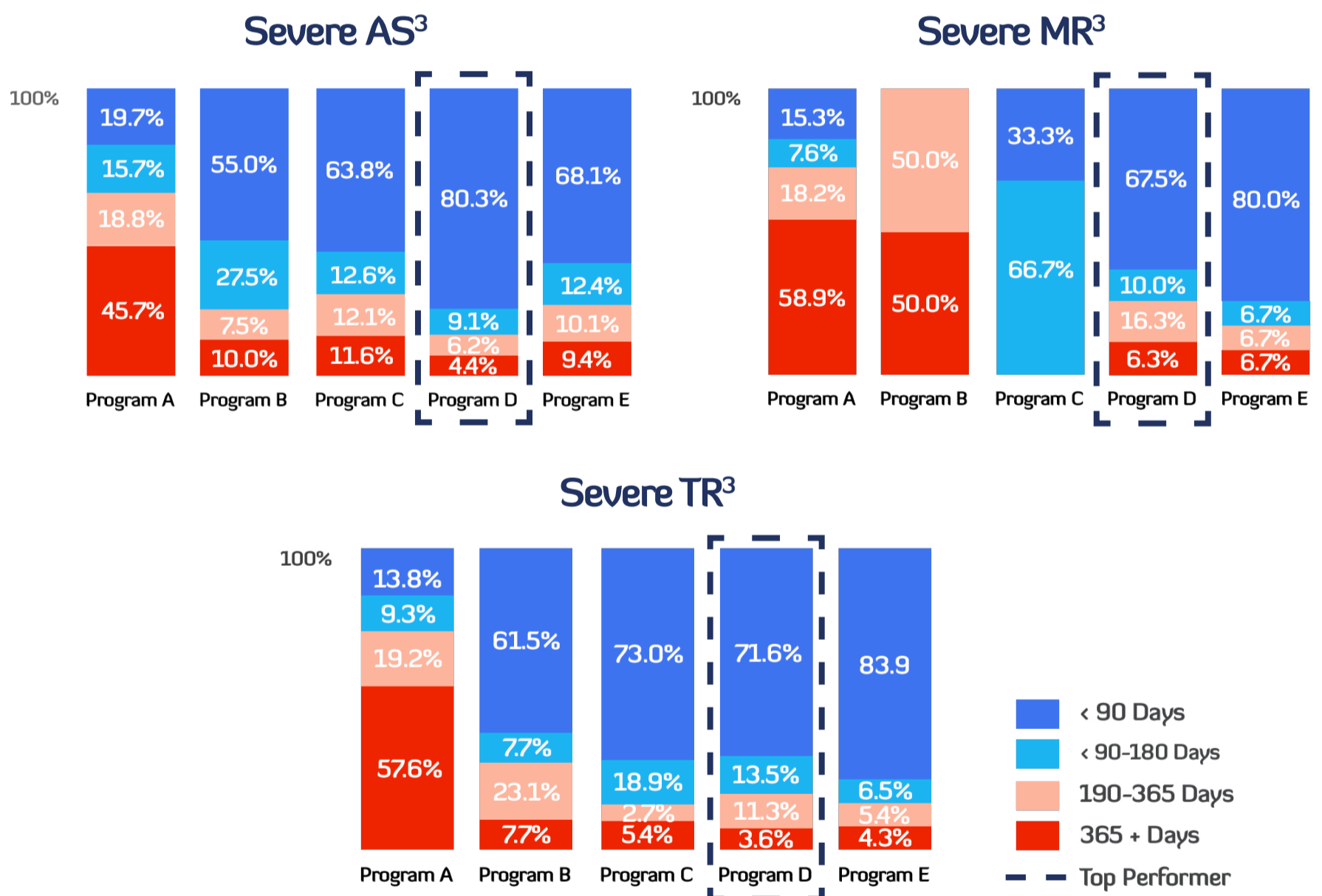
<sup>2</sup>Representative of untreated patients receiving a moderate to severe or severe diagnosis of AS or MR. Data excludes patients who are receiving a palliative care plan. Percentage based on patient population in CardioCare database from four randomly sampled healthcare facilities.

## Insight #3:

# Variability in time to treatment for structural heart disease

This retrospective analysis from five sites indicates a high level of variability in time from diagnosis to treatment for severe AS, MR, and TR between structural heart programs across the nation.<sup>3</sup>

### Time to Treatment by Heart Program for:



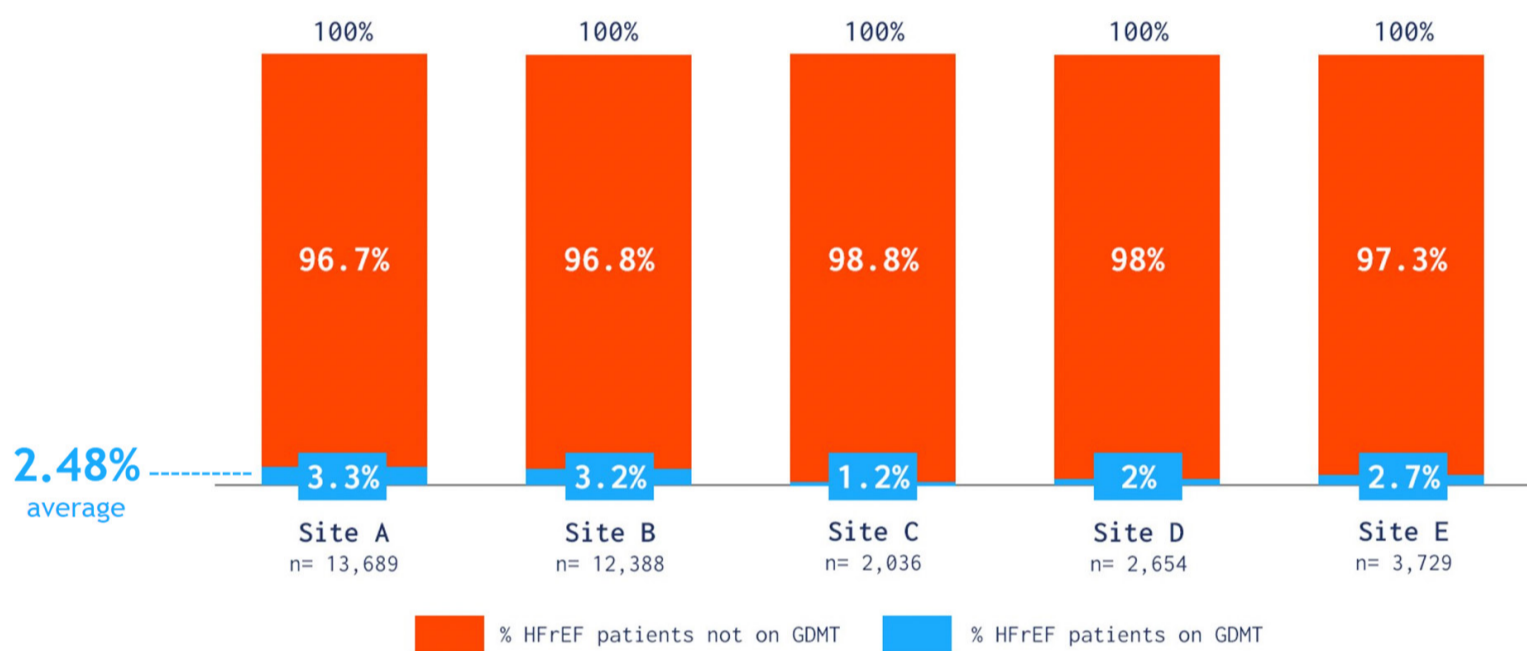
How do you know if your program is best-in-class at delivering timely treatment to patients?

<sup>3</sup>Analysis includes patients from a random sample of 5 sites who have been diagnosed and treated for severe AS, MR, or TR, with a diagnosis year not more than 36 months ago.

## Insight #4:

# Low rate of guideline directed medical therapy for patients with HFrEF

### Low GDMT Prescription Rate for HFrEF Patients<sup>4</sup> Despite Proven Benefits<sup>5</sup>



<sup>4</sup>Data on file. Early data representing 5 heart programs managing more than 50,000 HFrEF patients. Heart failure with a reduced ejection fraction is defined as (HFrEF) and guideline-directed medical therapy (GDMT) is defined by patients being prescribed all 4 medications to treat heart failure. <sup>5</sup>Maddox et al. (JACC 2021) <https://doi.org/10.1016/j.jacc.2020.11.022> Page 777, Section 5.1

## The CardioCare Platform: A Better Way to Manage SHD Patients

The CardioCare platform provides a comprehensive view of your structural heart patient population, delivers insights on demand to prioritize patient care, and applies artificial intelligence to help physicians predict the most at risk-patients in the future.

# About egnite

egnite is a digital health company focused on providing artificial intelligence solutions to help hospitals identify and manage their most at-risk structural heart patients. The company is a market leader in structural heart solutions with a vision to improve the outcomes for every structural heart patient in America. egnite's flagship AI platform, CardioCare, has partnered with over 50 hospitals nationwide and leverages the program's big data analytics platform of over one million echos used to elevate the standard of care for thousands of patients. The company is based in Aliso Viejo, Calif., for more information, visit [egnitehealth.com](https://egnitehealth.com).

## Sparking Transformation in Healthcare.

©2021 egnite, Inc. All Rights Reserved. egnite, egnite Inc., the spark logo, CardioCare, and the heart logo are trademarks of egnite, Inc or its affiliates. All other trademarks are property of their respective owners.

\*The CardioCare platform is not intended for use in the diagnosis, cure, mitigation, or prevention of structural heart diseases.

