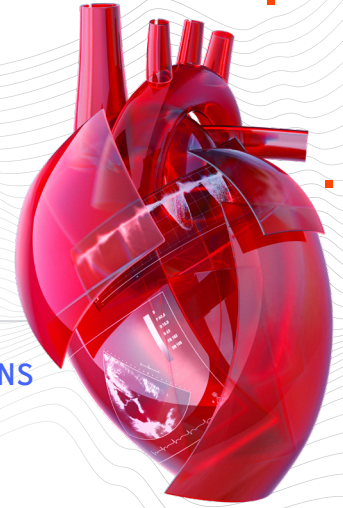


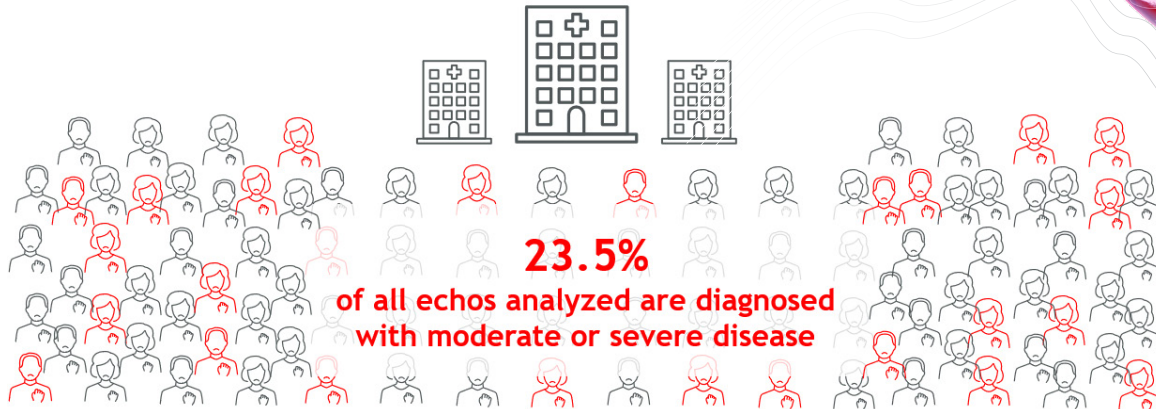
# Identifying the Most At-Risk Structural Heart Patients

## CardioCare

Quality Optimization Platform



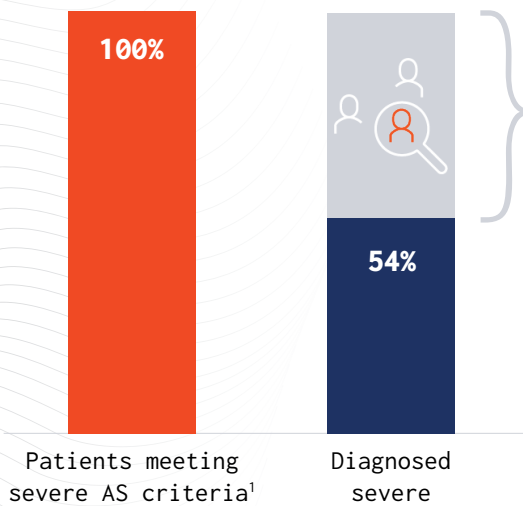
### STRUCTURAL HEART PROGRAMS MANAGE LARGE PATIENT POPULATIONS



### THE CARDIOCARE PLATFORM'S PREDICTIVE ALGORITHMS HELP PHYSICIANS:

- Identify undiagnosed severe aortic stenosis
- Track progression of moderate aortic stenosis

### HOW DO YOU KNOW IF A SEVERE PATIENT HAS BEEN MISSED?



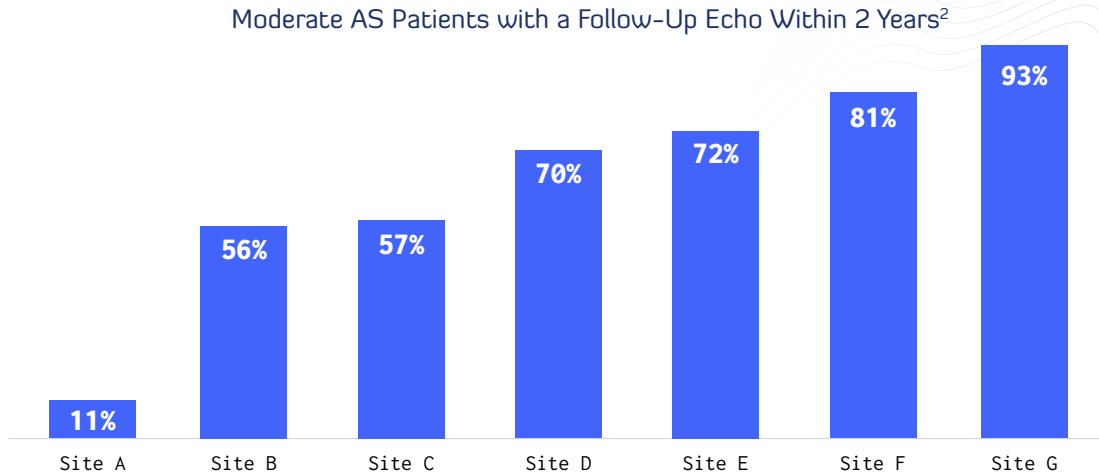
N=37 sites; October 2018 - May 2021

**1 in 3 patients** flagged by our predictive algorithm met all four criteria for Low Flow Low Gradient (LFLG) aortic stenosis

The CardioCare platform predicts the likelihood a patient has undiagnosed severe aortic stenosis, providing prioritized lists for physician follow-up.

## HOW DO YOU KNOW WHEN A MODERATE PATIENT HAS PROGRESSED TO SEVERE?

With more patients having delayed medical care due to the pandemic, hospital systems need a better way to identify their most at-risk patients who have not returned to the health system.



**CardioCare's predictive algorithm identifies your patients with a 70%+ chance of having already progressed from moderate to severe disease.**

For more information, please visit [egnitehealth.com/solutions](https://egnitehealth.com/solutions)

 @egnitehealth     [linkedin.com/company/egnite-health/](https://www.linkedin.com/company/egnite-health/)

\* This product is not intended for use in the diagnosis, cure, mitigation, treatment or prevention of structural heart diseases.

#### References

1. Based on ACC/AHA guidelines to assess aortic stenosis. 2. Per the 2020 ACC/AHA guidelines to reassess patients with moderate aortic stenosis between 1-2 years.

egnite, egnite Inc., the stylized logo, and CardioCare are trademarks of egnite, Inc. All other trademarks are property of their respective owners.

©2021 egnite, Inc. All Rights Reserved.

egnite • 65 Enterprise, Suite 455 Aliso Viejo, CA 92656 • [egnitehealth.com](https://egnitehealth.com)

PP-US-0033 v1.0

